

“Serve Him in Others”

## ST JOSEPH’S COLLEGE

### ***POLICY ON DRUG-RELATED ISSUES***

#### **Policy Statement:**

St Joseph’s College Community seeks to make a Christian response to drug-related issues.

The College community seeks to educate and, where necessary, respond to any issue which impacts on any of these areas of spiritual, social, cognitive, emotional and physical development in students.

The use of illicit drugs and inappropriately used legal substances are harmful to people, especially the young. It has become essential to respond through education and pastoral care to this issue in a meaningful way within this College community.

#### **Definition:**

For the purpose of this policy, Drug-related Issues are those created by activities of students/staff/visitors in possessing, trading or misusing legal or illicit drugs while in attendance at the College.

A drug is any substance (other than food, water and air) that when it enters the body, adversely changes the way the body functions.

Behaviours prohibited during any school-based or school-organised activities are the possession, trading and/or misuse of any legal or illicit drugs.

#### **Gospel Values linked to this Policy:**

Justice, Dignity, Forgiveness, Compassion, Endurance, Concern, Hope, Understanding, Liberation.

*(November 2012)*

#### **Legal Drugs Include (but not definitive):**

- Tobacco and tobacco products
- Alcohol
- Prescription medication (OTC)
- Inhalants (e.g. glue, solvents)
- Paracetamol

#### **Illicit Drugs Include:**

- Cannabis
- Hallucinogens
- Heroin
- Cocaine
- Ecstasy
- Amphetamines

**Note:** *It is an offence to possess any equipment for use in the administration and/or preparation of a prohibited (illicit) drug.*

**An offence involving illicit drug use may jeopardise a student’s enrolment.**

## **Education**

St Joseph's College seeks to provide education about the use of legal and illegal drugs within the curriculum which reflects:

- Gospel values;
- Responsible behaviour;
- Appropriate information which facilitates healthy decision-making;
- Prevention and harm-minimisation measures, and;
- Attitudes of respect for self and others.

Parents will be encouraged to support these efforts by:

- Becoming aware of trends in young people's substance use;
- Understanding the role that drug use plays in a young person's life;
- Enhancing problem-solving skills;
- Setting limits within the home;
- Identifying high risk situations.

Drug education may be delivered by appropriate school personnel, community organisations or individuals.

## **Prescribed and permitted Medications:**

- These are medicines that are prescribed by a doctor or permitted by a parent, which, when they are to be administered at school, must be handed in to Student Entrance with a permission note signed by a parent or guardian. Medications administered by the student will be supervised by a College First Aid officer at the nominated times.

## **Management of Incidents:**

- Drug related incidents will be managed in a pastorally caring and just manner.
- Cases where it is determined that a student/s has supplied substances to others for personal gain will be treated most seriously.

## **Counselling:**

- School counsellors will offer confidential assistance to any person who has a current drug-related issue or is at risk of becoming involved in drug use.
- Appropriate referrals to rehabilitation facilities will be made when required.

## **Procedures for Managing Drug-Related Incidents**

**The staff member who finds any student with illicit substances or any student who had consumed illicit substances or evidence or consumption should:**

- Establish the health status of the student
- Contact office for ambulance if emergency treatment is required
- Refer student to First Aid Room and monitor if needed
- Report the incident to Administration as soon as possible after catering for the health needs of the student
- Hand over to Administration any suspected illicit substance

**If no first aid required, the staff member MUST**

- **Confiscate any suspected illicit substance.**
- **Complete a Section 10 form and fax to CEO and Police.**
- **Any substance confiscated must be secured for Police collection.**

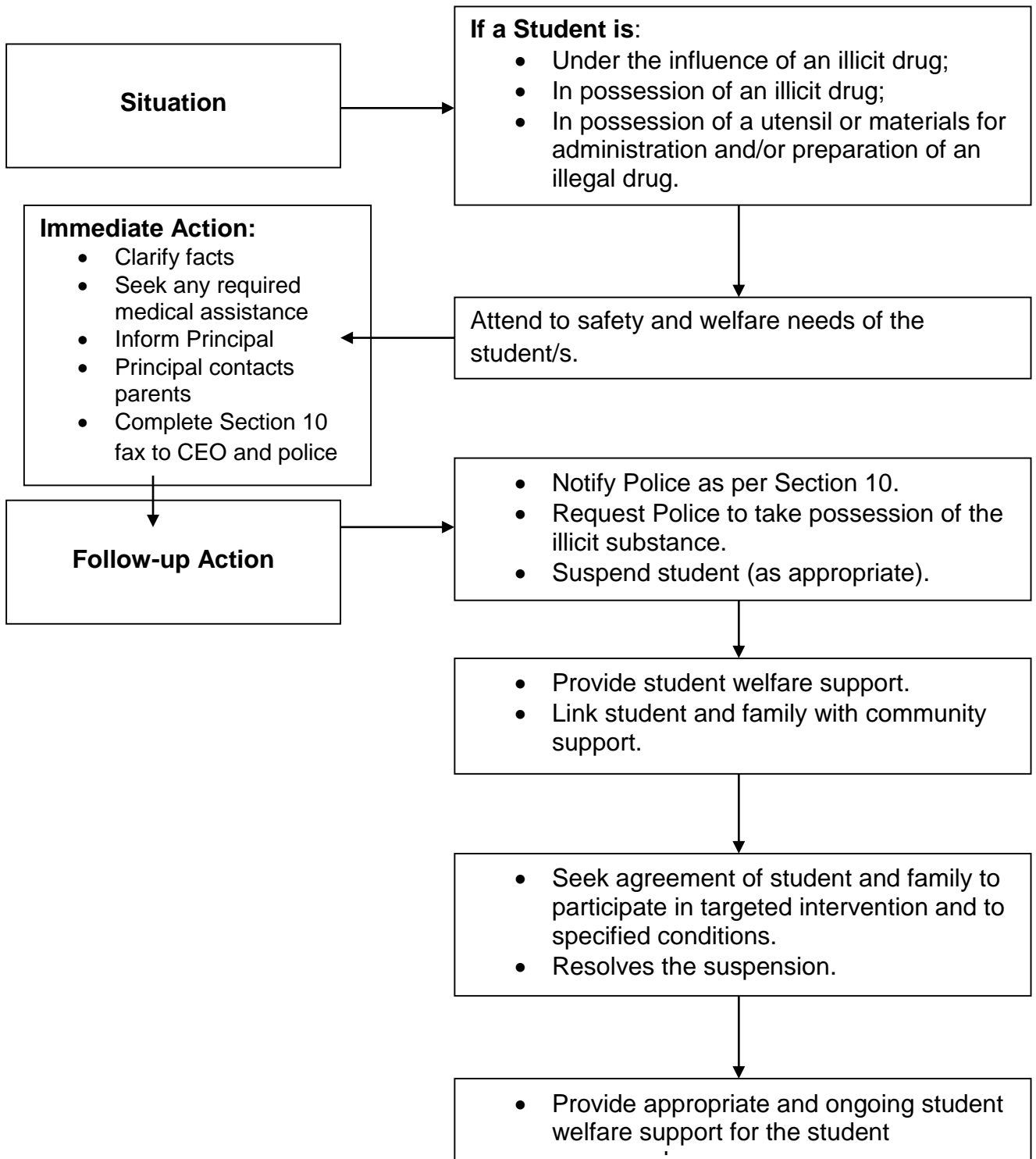
**The attending staff should:**

- Monitor student state of health

**Administration should:**

- Notify parents and inform them that a School Counsellor is available to assist student and parents
- Establish who and what substances are involved, then secure, label and store substance
- Notify police if illegal substance is suspected
- Identify person to consult with others regarding the incident
- Make staff aware of the incident and its investigation
- Seek CPIU feedback when available / appropriate
- Seek Counsellor feedback and from others if required (e.g. House Coordinator, Pastoral Care Teacher)
- Consider College response based on available data and College policies
- Clarify concerns of students and parents regarding proposed response
- Implement appropriate action based on the evidence of incident and the College policies
- Inform staff and CEO of responses
- Inform student community if appropriate

*(November 2012)*



## Procedures and Consequences for dealing with students involved with Legal Drugs

